

PART OF THE S.W. 1/4, OF SEC. 28, T.7N., R.1W., S.L.B. & M.

NORTH OGDEN  
BLOCK 25, PLAT A

IN NORTH OGDEN CITY

SCALE 1" = 50'

TAXING UNIT: 10

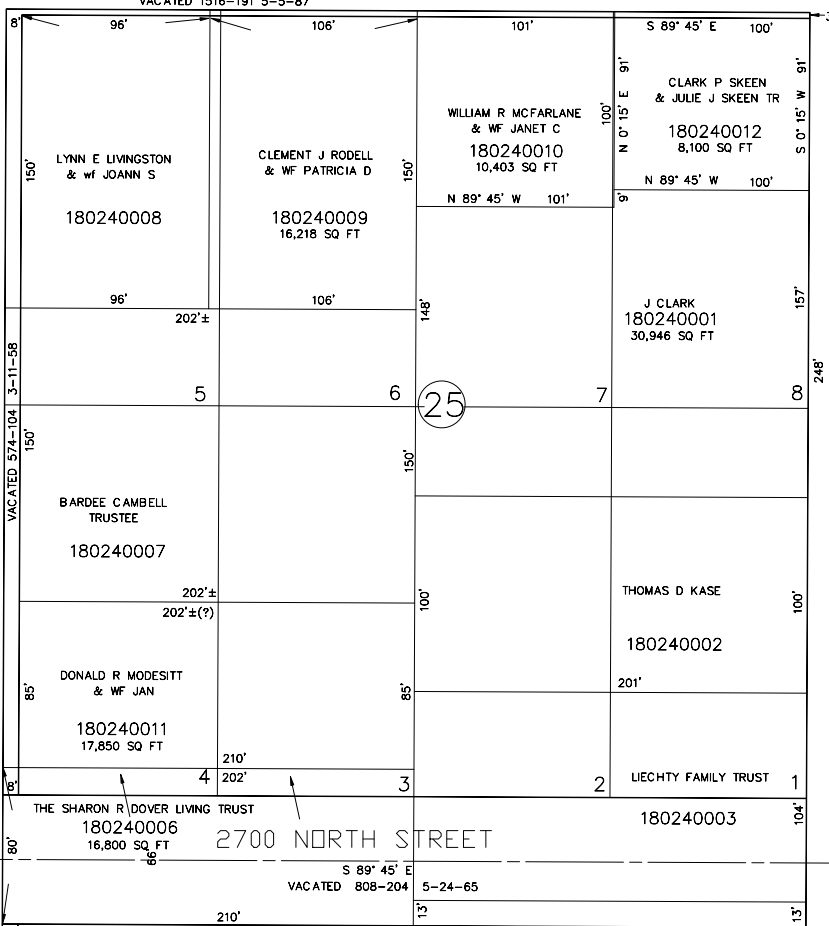
SEE PAGE 31

402'

2750 NORTH STREET

S 89° 45' E

VACATED 1516-191 5-5-87



SEE PAGE 23

SEE PAGE 25

SEE PAGE 17